

D O N G H I A  
TEXTILES

3D

DESIGN  
DIMENSION  
DURABILITY



2018



BARK



# 3D DESIGN DIMENSION DURABILITY

View textiles in a new way with Donghia's 3D Collection for 2018. The 3D's: Design, Dimension, and Durability serve as springboard and mantra for offerings with attributes well beyond the ordinary. Imaginative design has been cleverly paired with print, weave or embroidery to best create durable product of intriguing dimension, texture, and depth. The resulting textiles exhibit a purposeful layering of craft. Surfaces are alive, energized and in motion, as if powered from within. From sensuous sheer to weighty upholstery to super-chic indoor/outdoor, Donghia's 3D Collection features original, graphic, dynamic patterns, tactile constructions, and meaningful properties; all in the brand's signature, visionary color palette.

PEPPER

Highlights pop and pepper the dry, matte surface of a uniquely textural solid.







Interconnected geometric shapes suggest a computer's circuit board rendered in thread.



WOOLISH

Super-soft plain with cashmere look and touch for indoor/outdoor use.

DAYDREAM

A dreamy jacquard with cloud-like chenille motifs for indoor/outdoor use.

LOFTY

Lofty, tonal chenille, surprisingly versatile for indoor/outdoor use.

CRISSCROSS

Menswear windowpane plaid, in high relief, well-suited for indoor/outdoor use.









Print and embroidery combine to form shimmering, abstracted jet-sprays of water.





## AIRBRUSH

Patterning, light as air, appears to dust the surface of a weave which mimics spray-painting.





INFINITY

Jacquard weaving creates organic motifs, like windswept waterfalls, captured in time.

ECHO

Sound waves, expressed in graphic form, are like visual echoes printed on velvet.



PINCH

All-over pinch effect is exaggerated by pooling of color from piece-dyeing and soft finishing.

BARK

Handwork heightens the surface and impact of machine embroidery in a design reminiscent of tree bark.









## SNUGGLE

Broad bands of plush cotton velvet run horizontally for futuristic look and rhythm.

## SCRIBBLE

Specially colored yarns form an engaging scribble pattern within densely packed velvet pile.



## BLOCK PARTY

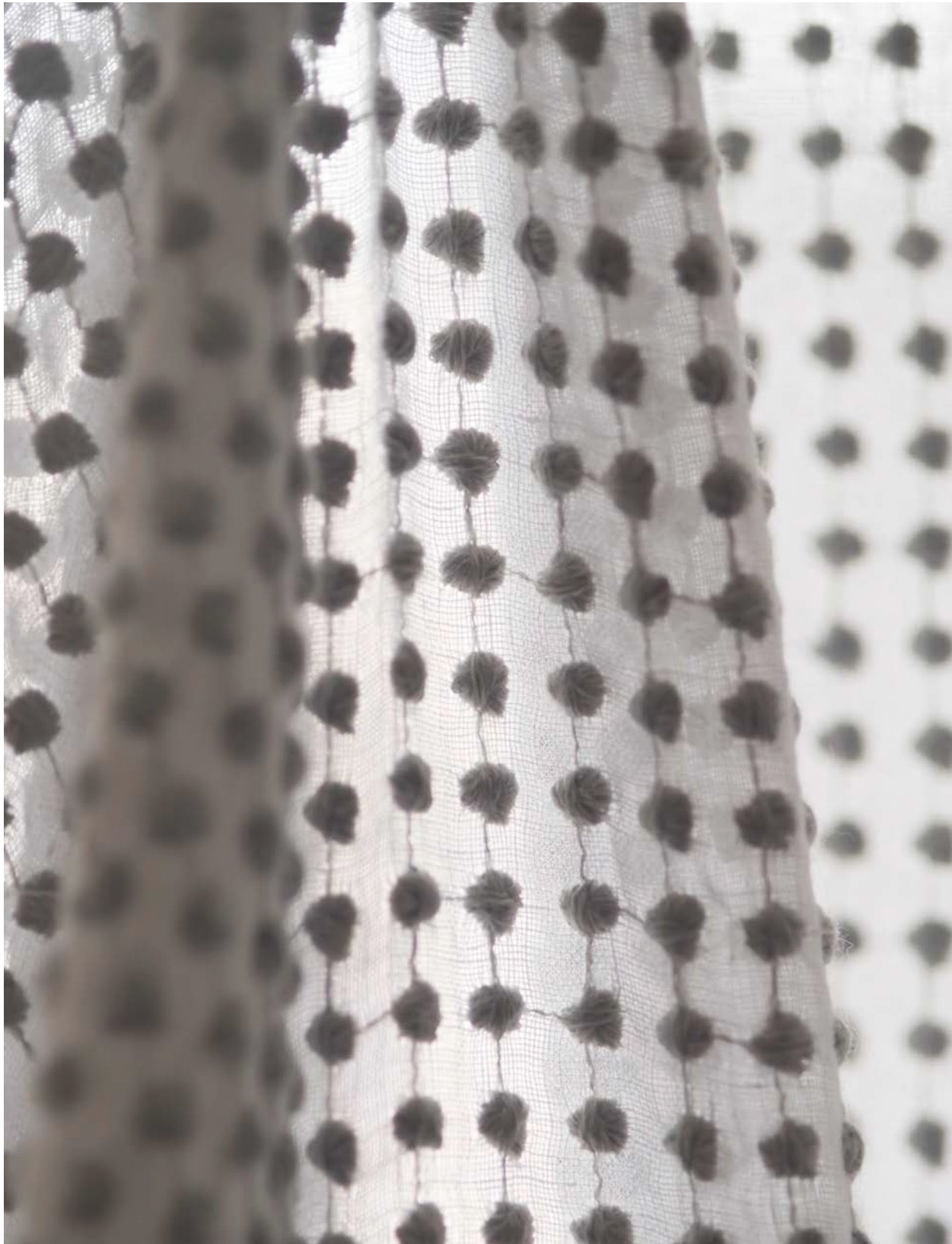
Machine and hand embroidery reveal the graphic shapes and palpable energy of the city.





# DOT

Rustic wool and linen, united with the simplest of geometric forms, achieve sheer perfection.







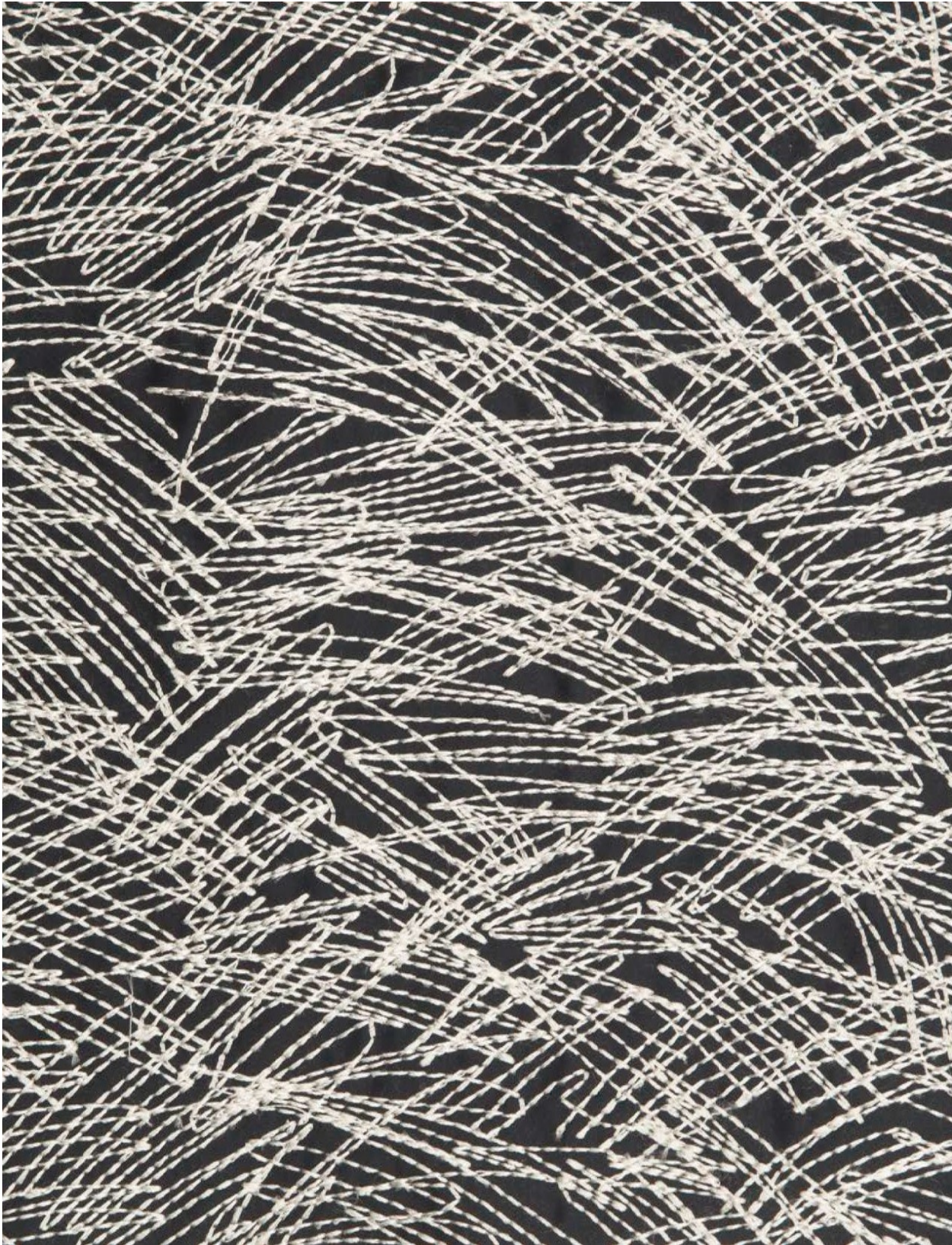


Diagonal stripes of irregular brushwork, printed on velvet, mimic leather and suede.



## DOODLE

Intersecting and overlapping stitches create an all-over pattern of dynamic lines.







Densely-packed clusters of stitches shift direction to play with light and enliven a parade of patterned stripes.



CIRCUIT



10336-02  
SKY



10336-06  
BLUSH



10336-08  
BEIGE



10336-09  
GREY



10336-10  
WHITE



10336-19  
BLACK

DOODLE



10337-02  
BLUE



10337-06  
BLUSH



10337-08  
BEIGE



10337-09  
GREY



10337-10  
WHITE



10337-19  
GRAPHITE



10337-29  
BLACK

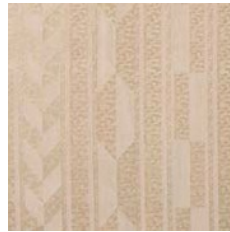
SECRETS



10338-02  
AQUA



10338-06  
BLUSH



10338-08  
BEIGE



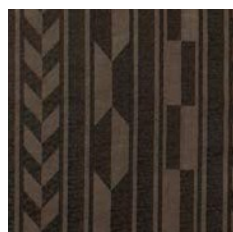
10338-09  
GREY



10338-10  
WHITE



10338-12  
NAVY



10338-19  
BLACK

JET



10340-02  
BLUE



10340-04  
SEAFOAM



10340-08  
TAUPE



10340-09  
SILVER



10340-10  
CREAM



10340-19  
GREY



10340-29  
CHARCOAL

BLOCK PARTY



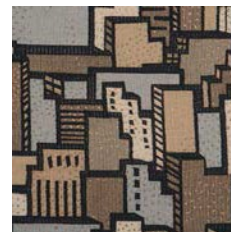
10341-01  
MULTI



10341-02  
BLUE



10341-05  
ORANGE



10341-08  
TAUPE



10341-09  
GREY

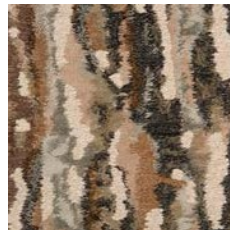
BARK



10342-02  
BLUE



10342-06  
BLUSH



10342-08  
TOBACCO



10342-10  
NEUTRAL

INFINITY



10343-02  
BLUE



10343-04  
SEAFOAM



10343-06  
BLUSH



10343-08  
BEIGE



10343-09  
GREY



10343-19  
CHARCOAL

AIRBRUSH



10344-02  
AQUA



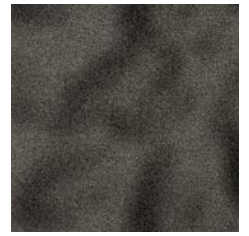
10344-06  
BLUSH



10344-09  
GREY



10344-12  
BLUE



10344-19  
CHARCOAL



10344-22  
NAVY

ECHO



10345-02  
AQUA



10345-08  
TAUPE



10345-09  
SILVER

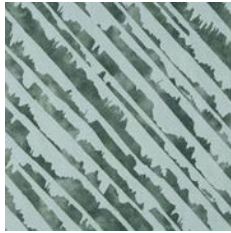


10345-10  
CREAM



10345-19  
BLACK

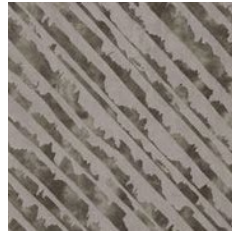
TILT



10346-02  
AQUA



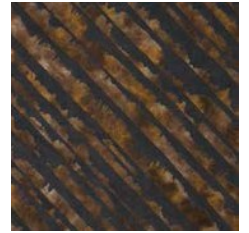
10346-08  
BEIGE



10346-09  
GREY



10346-12  
NAVY



10346-18  
BRONZE



10346-19  
CHARCOAL



SUNGGLE



10347-02  
AQUA



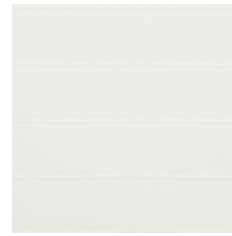
10347-06  
BLUSH



10347-08  
LINEN



10347-09  
GREY



10347-10  
WHITE



10347-12  
BLUE



10347-19  
CHARCOAL

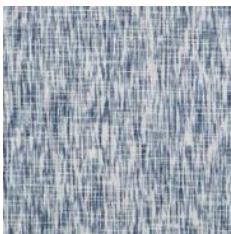


10347-20  
CREAM



10347-22  
NAVY

SCRIBBLE



10348-02  
BLUE



10348-08  
TAUPE



10348-09  
FROST



10348-10  
CREAM



10348-19  
GREY



10348-29  
CHARCOAL

PEPPER



10349-02  
SKY



10349-04  
SEAFOAM



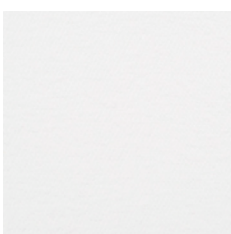
10349-06  
BLUSH



10349-08  
TOBACCO



10349-09  
GREY



10349-10  
WHITE



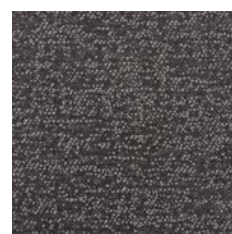
10349-12  
NAVY



10349-19  
DARK GREY



10349-20  
CREAM



10349-29  
CHARCOAL

PINCH



10350-02  
BLUE



10350-04  
SEAFOAM



10350-08  
LINEN



10350-09  
GREY



10350-10  
WHITE



10350-12  
NAVY



10350-18  
TAUPE



10350-19  
CHARCOAL



10350-28  
TOBACCO

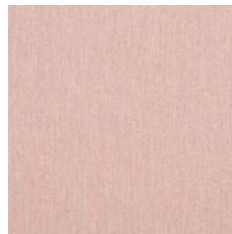
WOOLISH\*



10351-02  
BLUE



10351-04  
SEAFOAM



10351-06  
BLUSH



10351-08  
BEIGE



10351-09  
GREY



10351-10  
CREAM



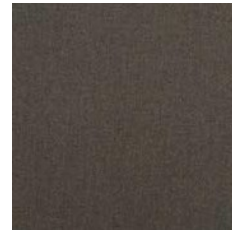
10351-12  
SKY



10351-18  
TAN



10351-19  
CHARCOAL



10351-28  
TOBACCO

LOFTY\*



10352-02  
BLUE



10352-04  
SEAFOAM



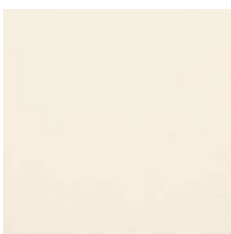
10352-06  
BLUSH



10352-08  
BEIGE



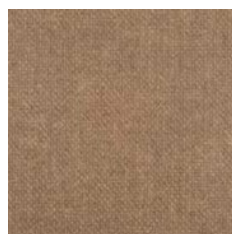
10352-09  
GREY



10352-10  
CREAM



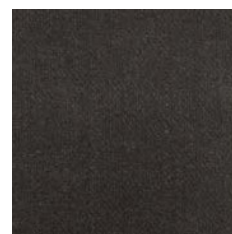
10352-12  
SKY



10352-18  
TAN

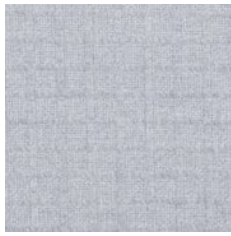


10352-19  
CHARCOAL



10352-28  
TOBACCO

CRISSCROSS \*



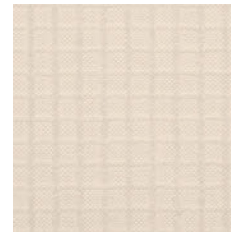
10353-02  
BLUE



10353-04  
SEAFOAM



10353-06  
BLUSH



10353-08  
BEIGE



10353-09  
GREY



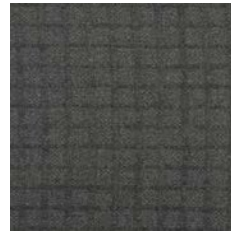
10353-10  
CREAM



10353-12  
SKY



10353-18  
TAN



10353-19  
CHARCOAL



10353-28  
TOBACCO

DAYDREAM \*



10354-02  
BLUE



10354-04  
SEAFOAM



10354-06  
BLUSH



10354-08  
BEIGE



10354-09  
GREY



10354-10  
CREAM



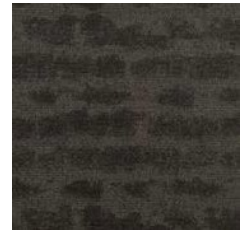
10354-12  
SKY



10354-18  
TAN



10354-19  
CHARCOAL



10354-28  
TOBACCO

DOT



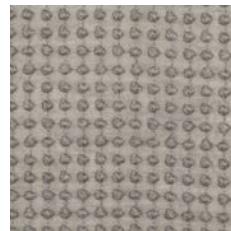
10355-08  
LINEN



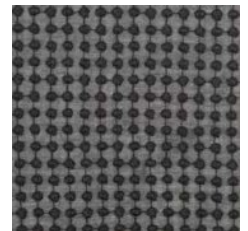
10355-09  
GREY



10355-10  
WHITE



10355-19  
DARK GREY



10355-29  
BLACK

\* Notes indoor/outdoor use

PORTICO\*



10356-01  
RED



10356-02  
SKY



10356-04  
SEAFOAM



10356-06  
BLUSH



10356-08  
BEIGE



10356-09  
DOVE



10356-10  
WHITE



10356-12  
BLUE



10356-14  
IVY



10356-16  
ROSEWOOD



10356-18  
TAUPE



10356-19  
GREY



10356-20  
CREAM



10356-22  
NAVY



10356-24  
TEAL



10356-28  
TOBACCO



10356-29  
DARK GREY



10356-39  
CHARCOAL

PORTICO

A grand mohair mimic with mélange effect, for indoor/outdoor use.



NORTH & SOUTH AMERICA

-  
DONGHIA, INC.  
500 BIC DRIVE  
GATE 1, SUITE 200  
MILFORD, CT 06461  
+1.203.701.2010  
1.800.DONGHIA  
[info@donghia.com](mailto:info@donghia.com)  
[www.donghia.com](http://www.donghia.com)

EUROPE, ASIA, AFRICA, OCEANIA

-  
RUBELLI SPA  
VIA DELLA PILA 47  
MARGHERA, VENEZIA  
30175 - ITALY  
+39.041.2584.411  
[donghia@rubelli.com](mailto:donghia@rubelli.com)  
[www.rubelli.com](http://www.rubelli.com)

Donghia is a company of the Rubelli Group.  
2018 Donghia. All rights reserved.





D O N G H I A